



# LISBON HEIGHTS

LIVING SPACES

VILLAS

1/2

## LOTE 4 4.C.E

**MORADIA V3**  
3-BEDROOM VILLA

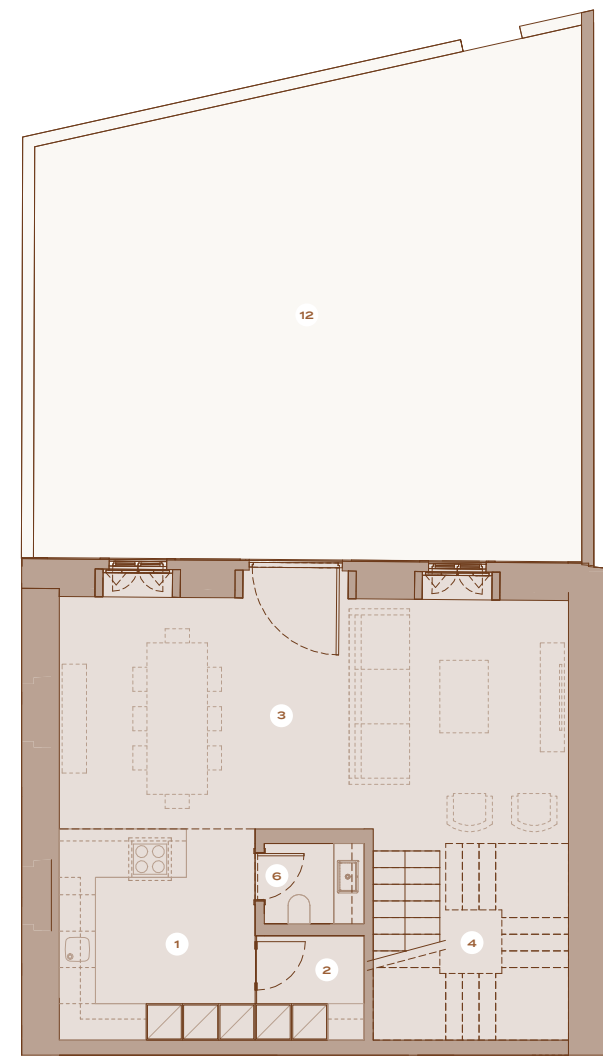
**EDIFÍCIO C, PISO 0**  
BUILDING C, GROUND FLOOR

**ABP\*** 138,76 m<sup>2</sup>  
**GPA\*** 138,76 sqm

**2 LUGARES**  
2 PARKING SPOTS

\* ABP – Área Bruta Privativa \* GPA – Gross Private Area

ÁREAS	AREAS	m <sup>2</sup> sqm
1. COZINHA	1. KITCHEN	11,30
2. LAVANDARIA	2. LAUNDRY ROOM	3,09
3. SALA	3. LIVING ROOM	32,78
4. CIRCULAÇÃO	4. HALLWAY	10,48
5. CIRCULAÇÃO	5. HALLWAY	12,68
6. I.S.	6. BATHROOM	2,19
7. I.S.	7. BATHROOM	3,51
8. QUARTO	8. BEDROOM	11,39
9. QUARTO	9. BEDROOM	11,53
10. SUITE	10. SUITE	13,16
11. IS SUITE	11. BATHROOM SUITE	4,84
12. JARDIM	12. GARDEN	75,13
13. TERRAÇO	13. TERRACE	57,24



Escala / Scale

## AMENITIES



**ESTAÇÃO PET-CARE**  
PET-CARE STATION



**GINÁSIO**  
GYM



**PISCINA**  
OUTDOOR POOL



**LAVAGEM DE CARRO**  
CAR WASH



**SKY LOUNGE**  
SKY LOUNGE



**ESPAÇO DE CO-WORK**  
CO-WORKING SPACE





# LISBON HEIGHTS

LIVING SPACES

VILLAS

2/2

## LOTE 4 4.C.E

**MORADIA V3**  
3-BEDROOM VILLA

**EDIFÍCIO C, PISO 1**  
BUILDING C, 1<sup>ST</sup> FLOOR

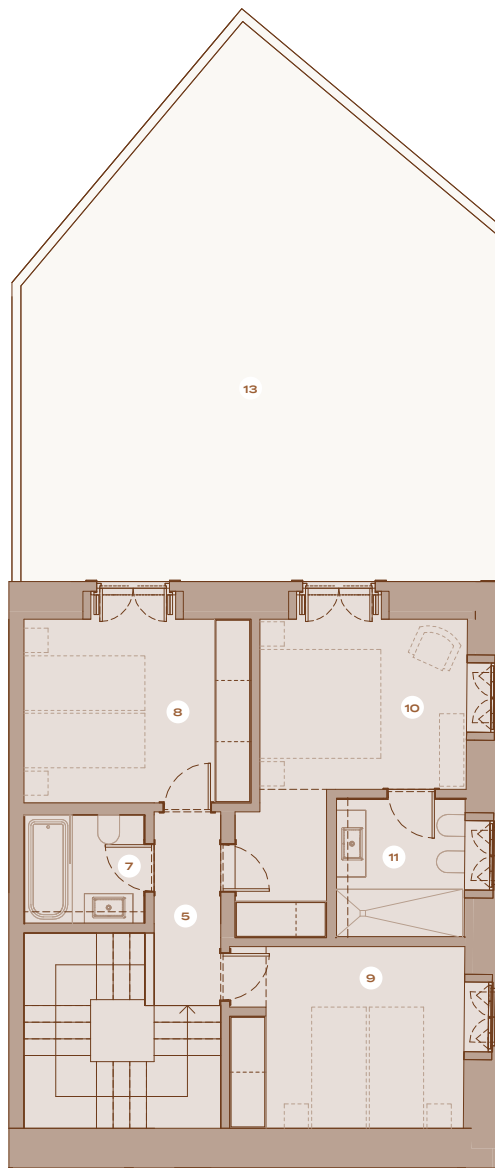
**ABP\*** 138,76 m<sup>2</sup>  
**GPA\*** 138,76 sqm

**2 LUGARES**  
2 PARKING SPOTS

\* ABP – Área Bruta Privativa \* GPA – Gross Private Area

### ÁREAS

ÁREAS	AREAS	m <sup>2</sup> sqm
1. COZINHA	1. KITCHEN	11,30
2. LAVANDARIA	2. LAUNDRY ROOM	3,09
3. SALA	3. LIVING ROOM	32,78
4. CIRCULAÇÃO	4. HALLWAY	10,48
5. CIRCULAÇÃO	5. HALLWAY	12,68
6. I.S.	6. BATHROOM	2,19
7. I.S.	7. BATHROOM	3,51
8. QUARTO	8. BEDROOM	11,39
9. QUARTO	9. BEDROOM	11,53
10. SUITE	10. SUITE	13,16
11. IS SUITE	11. BATHROOM SUITE	4,84
12. JARDIM	12. GARDEN	75,13
13. TERRAÇO	13. TERRACE	57,24



Escala / Scale

### AMENITIES



**ESTAÇÃO PET-CARE**  
PET-CARE STATION



**GINÁSIO**  
GYM



**PISCINA**  
OUTDOOR POOL



**LAVAGEM DE CARRO**  
CAR WASH



**SKY LOUNGE**  
SKY LOUNGE



**ESPAÇO DE CO-WORK**  
CO-WORKING SPACE



INVESTIDOR  
INVESTOR **AGG** CAPITAL  
MANAGEMENT

PROMOTOR  
DEVELOPER

**NORFIN**  
SOCIÉTÉ

MEDIAÇÃO  
BROKERAGE

Quintela  
+Penalva

**Knight  
Frank**

**CASTELHANA**  
Sociedade de Mediação Imobiliária, Lda  
AMI 3497

PROJETISTA  
DESIGNER

**INTERGAUP**