



# LISBON HEIGHTS

LIVING SPACES

APARTMENTS

## LOTE 2 2.A.1.D

### APARTAMENTO T4 4-BEDROOM APARTMENT

**BLOCO A, 1º Piso**  
BLOCK A, 1<sup>ST</sup> FLOOR

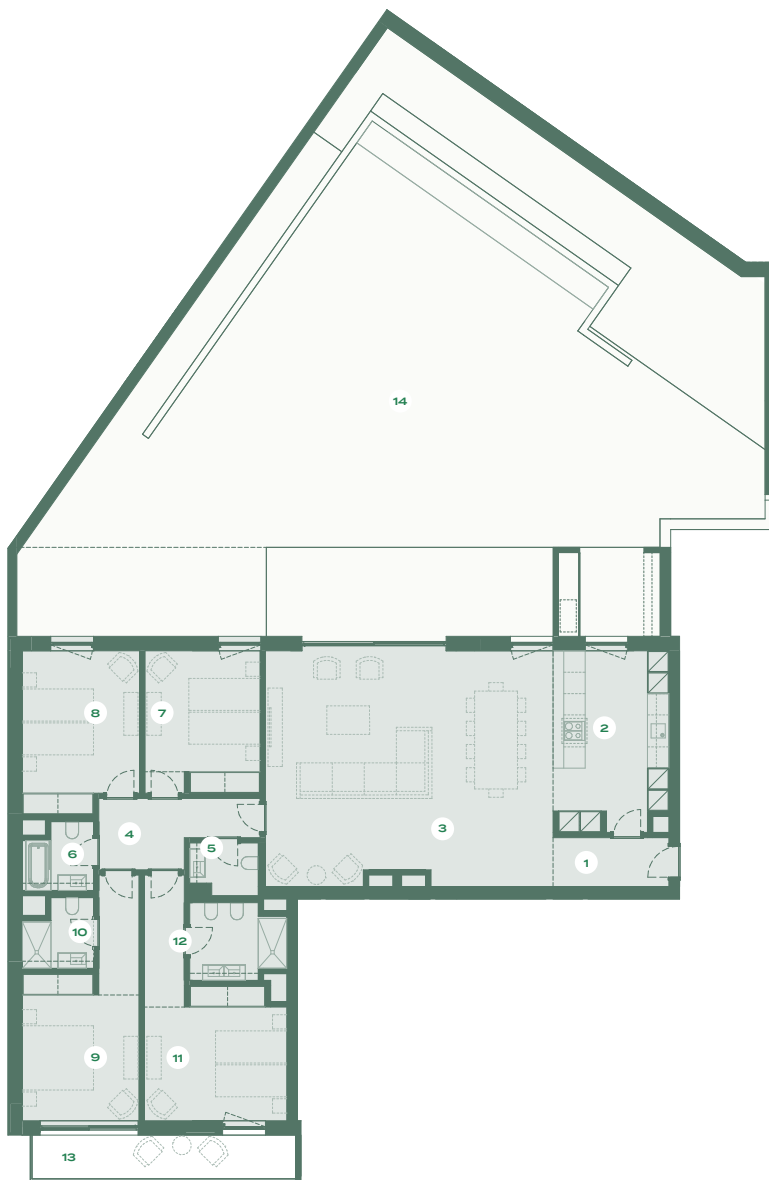
**ABP\*** 188,87 m<sup>2</sup>  
**GPA\*** 188,87 sqm

**2 LUGARES**  
2 PARKING SPOTS

\* ABP – Área Bruta Privativa \* GPA – Gross Private Area

#### ÁREAS

ÁREAS	AREAS	m <sup>2</sup> sqm
1. HALL ENTRADA	1. ENTRANCE HALL	4,47
2. COZINHA	2. KITCHEN	16,02
3. SALA	3. LIVING ROOM	52,57
4. CIRCULAÇÃO	4. HALLWAY	7,14
5. I.S.	5. BATHROOM	2,63
6. I.S.	6. BATHROOM	3,43
7. QUARTO	7. BEDROOM	12,81
8. QUARTO	8. BEDROOM	14,37
9. SUITE	9. SUITE	16,53
10. IS SUITE	10. BATHROOM SUITE	3,44
11. SUITE	11. SUITE	18,22
12. IS SUITE	12. BATHROOM SUITE	5,37
13. VARANDA	13. BALCONY	9,50
14. JARDIM	14. GARDEN	230,98



Escala Scale

#### AMENITIES



**ESTAÇÃO PET-CARE**  
PET-CARE STATION



**GINÁSIO**  
GYM



**PISCINA**  
OUTDOOR POOL



**LAVAGEM DE CARRO**  
CAR WASH



**SKY LOUNGE**  
SKY LOUNGE



**ESPAÇO DE CO-WORK**  
CO-WORKING SPACE



INVESTIDOR  
INVESTOR **AGG** CAPITAL  
MANAGEMENT

PROMOTOR  
DEVELOPER

**NORFIN**  
SOCIÉTÉ À RESPONSABILITÉ LIMITÉE

MEDIAÇÃO  
BROKERAGE

Quintela  
+Penalva

**Knight  
Frank**

**CASTELHANA**  
Sociedade de Mediação Imobiliária, Lda  
AMI 3497

PROJETISTA  
DESIGNER

**INTERGAUP**

AVISO LEGAL: As informações e imagens contidas nesta planta são meramente indicativas e podem estar sujeitas a alterações ou variações devido a requisitos técnicos, construtivos ou legais.  
LEGAL NOTICE: The information and images contained in this plan are merely indicative and may be subject to changes or variations due to technical, constructive or legal requirements.